



Good Shepherd<sup>LCMS</sup>

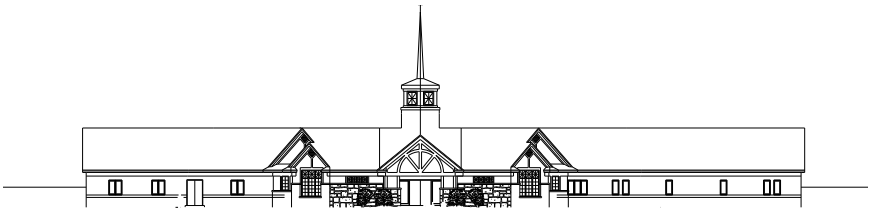
Church Phone 388-4336  
Pastor Vance Becker  
Director/Teacher Tracy Mielke  
Home Phone 345-8871  
2101 LorRay Dr.  
North Mankato, MN. 56003  
[Http://go.to/goodshepherd](http://go.to/goodshepherd)

# Little Lambs Preschool Parent Information Booklet

## Policies and Procedures

“Train up a child in the way he should go and when he is old he will not depart from it”.

Proverbs 22:6



The Lutheran Church of the

*Good Shepherd*

North Mankato - Minnesota



# Table of Contents

<b>Page</b>	<b>Topic</b>
1	.Message from Pastor
2	.Tuition Periods, Fees
3	.Tentative Units
4	.History
4	.Enrollment
4	.Bad Weather
5	.Field Trips
5	.Medication
5	.Health and Emergencies
6	.Conferences
6	.Clothing
6	.Termination of Enrollment
6	.Snacks
7	.Personal Belongings
7	.Show and Tell
7	.Transportation
8	.Insurance
8	.Birthdays
8	.Discipline
9	.Typical School Day
10	.Tentative Schedule
Backcover	.School Calendar

Dear Parent,

The members of The Lutheran Church of the Good Shepherd welcome your child to Little Lambs Preschool, which is a part of the Good Shepherd Lutheran School. It is an honor and a joy to assist you in the following the Bible's instruction to parents with children to "bring them up in the training and instruction of the Lord." (Eph. 6:4) Here your child will be helped to develop in body, mind and spirit.

A special benefit your child will receive is that here the children will both learn about and experience the love of Jesus for them and for others. We nurture genuine saving faith as we follow Jesus words, "Let the little children come to me, and do not hinder them, for the kingdom of God belongs to such as these. I tell you the truth, anyone who will not receive the kingdom of God like a little child will never enter it." (Luke 18:16-17)

The church is also here to help the rest of the family with spiritual growth and care. Jesus wants to gather all, young and old, into the flock of his little lambs.

This handbook will help you understand the procedures we will follow together to make your child's experience this year is a happy, safe, and beneficial as possible. May God also add his blessings to what we do together.

In Christ's service,

Pastor Vance Becker

# Tuition Periods

The yearly cost is divided into nine payments. These payments are due on the first of each month. Due to the ongoing expenses of the school no refund will be made for absences.

Tuition for the 2007-2008 school covers the school year starting September 10th, 2007 and ending May 30th, 2008.

## **M-W-F Mornings**

9:00AM-11:30AM

\$95.00 \*monthly payments

\$882.00 annual payment

## **M-W-F Afternoons**

12:30PM-3:00PM

\$95.00 \*monthly payments

\$882.00 annual payment

## **T-Th Mornings**

9:00AM-11:30AM

\$75.00 \*monthly payments

\$675.00 annual payment

\*There will be a \$10.00 late fee for tuition paid after the 5th of the month.

# Tentative Units

## **September**

Getting to know you, Teddy Bear, Feelings, Fall, Apples

## **October**

Harvest, Pumpkins, Community Helpers, Fire Safety

## **November**

Water, Thankfulness, Feast, Food Groups, Cooking

## **December**

Christmas Story, Babies

## **January**

Weather, Winter, Seasons, Shapes, Numbers

## **February**

Solar System, Valentine, Dinosaurs

## **March**

Spring, Clothes, Eggs, Color

## **April**

Animals/Zoo, Gingerbread Man

## **May**

Review, Outdoor Fun

# **History**

**Open Since Sept 2001**

“The goal of Little Lambs Preschool is to promote the spiritual, intellectual, social, emotional and physical development of the young child”.

# **Enrollment**

Little Lambs Preschool accepts children ages three to five. The child must be three before September 1st. Applications are given priority in the following order.

1st - Members of Good Shepherd Lutheran Church

2nd - Currently enrolled students

3rd - All others as applications are received.

# **Bad Weather**

In the event of BAD WEATHER, listen for closing announcements pertaining to the Mankato Public School District #77. If they are closed, we will close; no separate announcement concerning Little Lambs will be made over the air. Parents or designated adults may pick up students at any time they feel weather is severe.

## **Field Trips**

Children will not be allowed to participate in field trips without their parent's/guardian's written permission. Parents will be asked to assist with transportation.

## **Medication**

Try to schedule doses during out-of-school hours. Should he/she need medication during school hours, the medication must be in its original container (well labeled) and the parent must fill out a medication form.

## **Health and Emergencies**

If your child becomes ill and will miss school, please let us know. This is especially important in the case of a communicable disease such as chicken pox, lice, scabies, impetigo, or ringworm. We will notify other parents in writing so they may be alerted to the incubation period and symptoms. The child should be kept at home if there is a evidence of a fresh cold.

Children should stay home for the first two days of a cold and should not return until 24 hours after a fever has gone down. If your child has sore eyes or ears, a temperature, an upset stomach, sore throat, cough, diarrhea, he or she should be kept at home.

In the event a child becomes ill at school the parent will be notified and the child kept isolated until the parent arrives. A staff member will be with the child at all times. Teachers and assistants are trained in First Aid and CPR but in case of serious injury additional emergency care will be sought.

# **Conferences**

There will be a short fall conference designed to acquaint the teachers with your goals and child's needs.

The second will be offered when the teachers know the children in the school setting. (March)

Contact the school at any time if there is a question, problem or change which might affect your child's adjustment.

# **Clothing**

Please dress your child in clothing he or she feels free to play in. We will be painting and making alot of messes. In cold or cool weather, sweater, snowsuit, cap and mittens will be needed for outdoor play. Shoes with non-slip type soles are required as children will participate in active large muscle play.

Each child should have a book bag or back pack to carry home projects, notes and personal items.

If your child is apt to have a toileting accident, please keep a complete change of clothing in his or her bag.

# **Termination of Enrollment**

Should your family be moving or otherwise needing to terminate their enrollment the school must have at least two weeks notice.

# **Snacks**

Please let us know if your child has any food allergies.

We are asking that each child bring two (2) boxes of crackers for Fall term and two (2) boxes of crackers for Winter term and two (2) boxes of crackers for Spring term. Juice and/or milk will be provided.

# Personal Belongings

Please label all clothing as well as any items your child may bring for sharing. Please do not bring things that can be easily broken. Please do not bring any toy which can go in the mouth such as balloons, whistles, musical instruments, etc....

# Show and Tell

Encourage your child to bring meaningful things to share. We enjoy sharing books, nature treasures, pictures, etc... PLEASE HAVE YOUR CHILD LEAVE HIS OR HER TOY GUNS AT HOME. Guns can be extremely over-stimulating in group play.

# Transportation

Little Lambs assumes no responsibility for transportation of children to and from the school. Parents may desire to arrange car pools.

**Important:** If your child will be picked up at school by someone rather than your usual arrangement, please let us know in writing or by phone; don't rely on the child to deliver the message. WE WILL NOT RELEASE A CHILD TO AN UNAUTHORIZED PERSON.

## **Insurance**

Little Lambs is covered by liability insurance as required for licensure.

## **Birthdays**

Each child will have the opportunity to celebrate his or her birthday at school. Summer birthdays will be celebrated on the 1/2 birthday (July 10th on Jan 10th for example). Special birthday treats may be provided by the family.

## **Discipline**

Discipline will be dealt with in a positive way through encouragement and praise. Emphasis will be put on the Child's positive qualities. Children will learn it is more fun if they cooperate. If a specific problem persists, the parents will be contacted to help in working it out.

# Typical School Day

## Morning Class

9:00-9:45 - Free Play

9:45-10:10 - 1st Circle Time  
Songs, Stories, Sharing, etc...

10:15-10:30 - Art or Music

10:30-10:50- Snack

10:50-11:10 - Gym Time

11:10-11:25 Bible Circle

11:30 - Dismiss

## Afternoon Class

12:30-1:15 - Free Play

1:20-1:45 - 1st Circle Time  
Songs, Stories, Sharing, etc...

1:50-2:05 - Art or Music

2:05-2:00- Snack

2:20-2:40 - Gym Time

2:40-2:55 Bible Circle

3:00 - Dismiss

# Tentative 2007-2008 School Calendar

Sept 5th, Wednesday “Open House” 6:00-7:30

1st day of school - Sept 10th (M-W-F)

1st day of school - Sept 11th (T-Th)

October 17th, 18th & 19th, **No school** MEA

November 19th-23rd, **No school** - Thanksgiving

December 13th & 14th X-mas program

Dec. 17th - Jan. 7th, 2005 **No school** Christmas

Jan 21st **No school** Martin Lutheran King Jr Day

February 18th, **No school** Presidents Day

March 17th thru 24th, **No school** Easter break

Friday, May 29th and 20th, Last day of school

Have a good Summer :-)



